



**MTPConnect**

MedTech and Pharma Growth Centre

**TTRA**

TARGETED TRANSLATION  
RESEARCH ACCELERATOR  
DIABETES + CARDIOVASCULAR DISEASE

# TTRA INFORMATION SESSION:

## Funding call for Research

## Projects – Round 3

MONDAY 06 FEBRUARY 2023 | 12:30-1:45PM AEDT



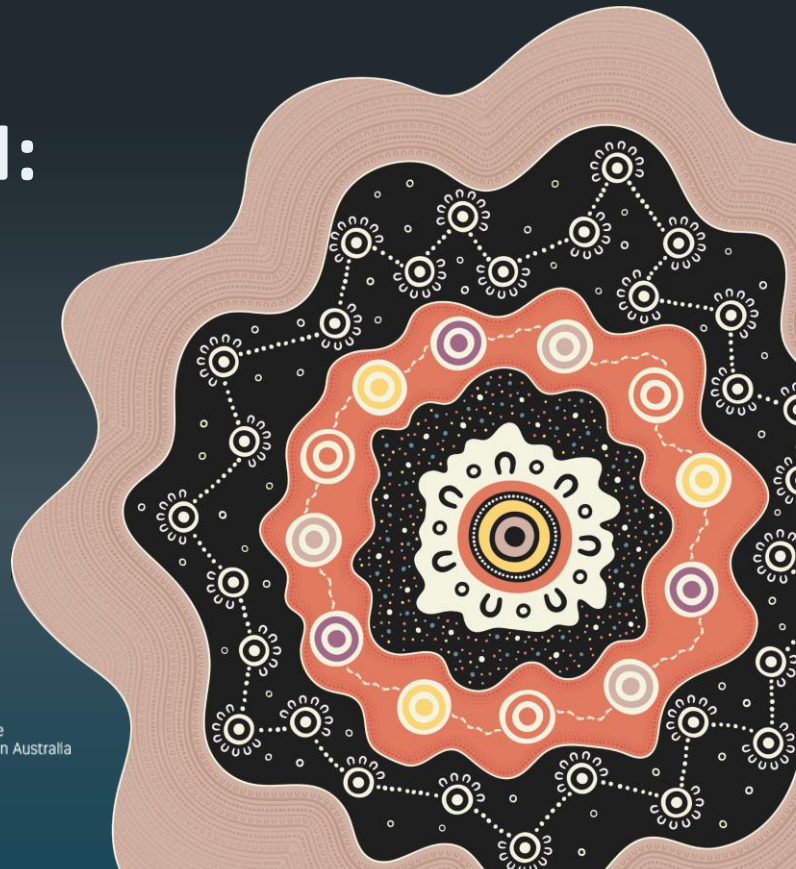
Australian Government  
Department of Industry,  
Science and Resources

Industry  
Growth  
Centres

**MTPConnect**



Championing a sector-led approach to accelerating the growth of the  
medical technology, biotechnology and pharmaceutical ecosystem in Australia





Thank you for joining us.

Our webinar will be starting shortly...

# Join our network!



Follow us and our CEO on Twitter  
**@MTPConnect\_AUS @StuDignam**



Subscribe to  
**The MTPConnect Podcast**



Join us on LinkedIn  
**@MTPConnect**



Subscribe to our  
**monthly newsletter**

**MTPCONNECT.ORG.AU/NETWORK**

# Connect with the MTPConnect TTRA Team

## TTRA Program Team



**Dr Mana Liao**

Acting Senior Director



**Dr Erin McAllum**

Acting Director



**Dr Andionne Parlade**

Associate Project Manager



For more information, please contact: [ttra-dc vd@mtpconnect.org.au](mailto:ttra-dc vd@mtpconnect.org.au)



**MTPConnect**

MedTech and Pharma Growth Centre

**TTRA**

TARGETED TRANSLATION  
RESEARCH ACCELERATOR  
DIABETES + CARDIOVASCULAR DISEASE

# TTRA INFORMATION SESSION:

## Funding call for Research

## Projects – Round 3

MONDAY 06 FEBRUARY 2023 | 12:30-1:45PM AEDT



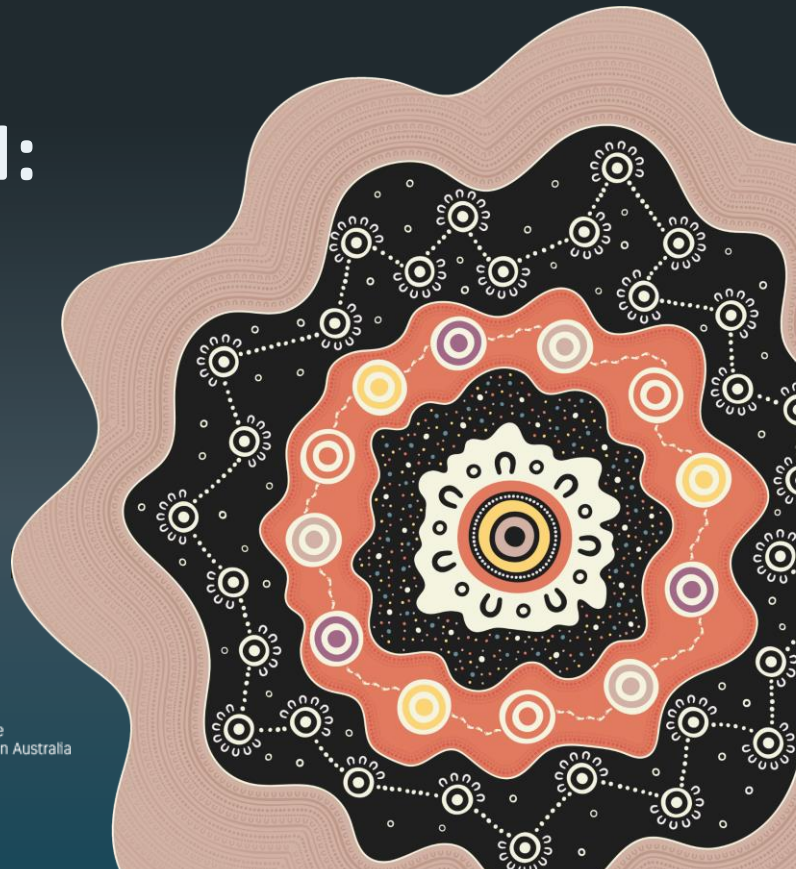
Australian Government  
Department of Industry,  
Science and Resources

Industry  
Growth  
Centres

**MTPConnect**



Championing a sector-led approach to accelerating the growth of the  
medical technology, biotechnology and pharmaceutical ecosystem in Australia



# Welcome and Acknowledgement of Country



**Dr Mana Liao**

**Acting Senior Director TTRA Program**

# Housekeeping



For information please contact  
[TTRA-DCVD@MTPCONNECT.ORG.AU](mailto:TTRA-DCVD@MTPCONNECT.ORG.AU)

## QUESTIONS



- Please enter questions in the **Q&A BOX** (*not the CHAT box*)
- You can **SUBMIT ANONYMOUSLY** – Just click the checkbox
- **Have the same question as someone else?**  
You can **UPVOTE** a question by clicking the **THUMBS UP**

## RECORDING



- This webinar will be recorded and slides published **within 48 hours** – We'll email you when they're ready!
- View the **ON-DEMAND VIDEO** at [mtpconnect.org.au/webinars](https://mtpconnect.org.au/webinars)
- Listen by subscribing to **THE MTPCONNECT PODCAST**  
Available on Apple Podcasts, Spotify and on our website



# The TTRA Team

## MTPConnect



**Dr Mana Liao**  
Acting Senior  
Director



**Dr Erin McAllum**  
Acting Director



**Dr Andionne Parlade**  
Associate Project  
Manager

## TTRA Project Partners



**Amabel Tan**  
Program Director,  
TTRA



**Megan Campbell**  
Operations Director



**Dr Michelle Kennedy**  
Executive Manager of  
Research and  
Knowledge Translation



**Grace Lethlean**  
Chief Product  
Officer



**Olivia White**  
MedTech Venture  
Partner



**Dr Leigh Ford**  
Project Manager,  
TTRA Program

## Co-Design Group



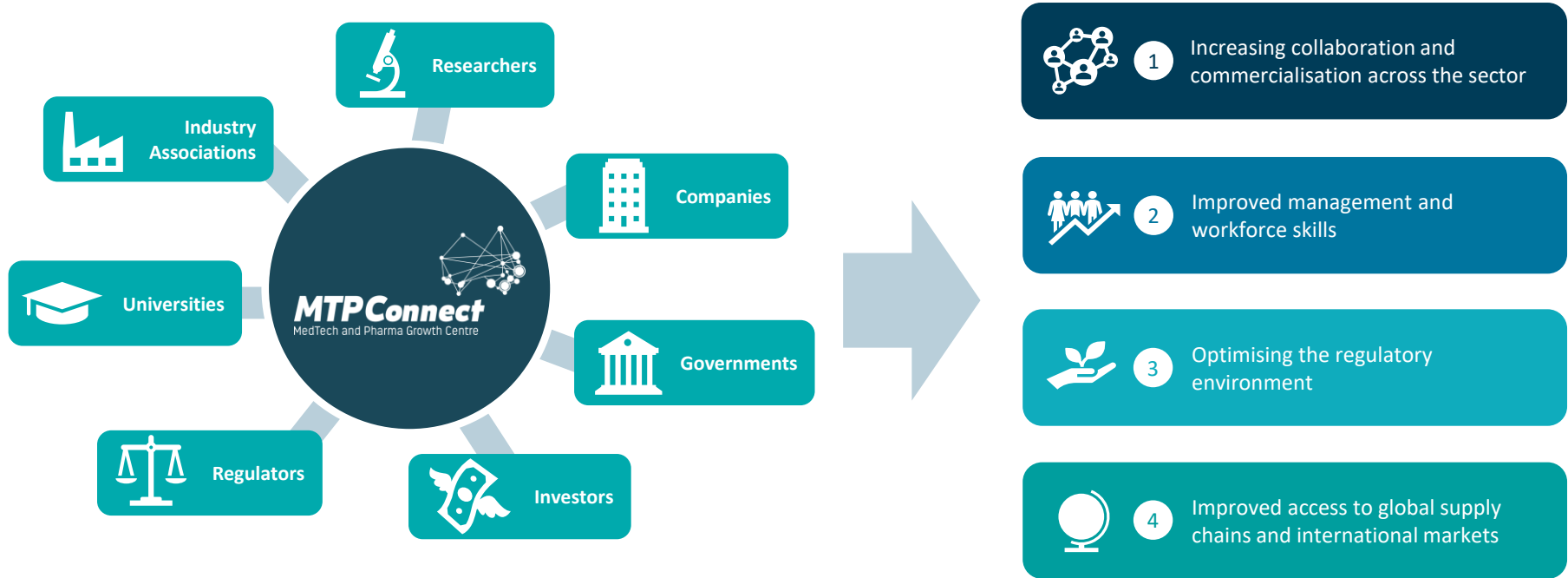
**Christopher Lee**  
Diabetes Consumer and  
Advocate; Gulumerridjin  
(Larrakia), Wardaman and  
Karrajarri Nations  
Assistant Director, Aged Care  
and Disability Programs,  
NACCHO



**Deanne Minniecon**  
National Manager,  
Aboriginal and Torres Strait  
Islander Engagement,  
Diabetes Australia



# MTPConnect's goal is to accelerate the growth of Australia's MTP sector



# MTPConnect Programs Overview @\$182M

## Department of Industry, Science and Resources



Growth Centre  
Project Fund

**\$15.6M**

40 Projects

## Department of Health - Medical Research Future Fund



**Biomedical**  
TRANSLATION BRIDGE  
PROGRAM

**\$22.3M**

21 Projects



**BioMedTech Horizons**  
PROGRAM

**\$45M**

46 Projects



**\$32M**

20 Training partners  
46 Training programs



**\$47M**

16 Research projects  
2 Research centres  
Round 3 – Open FY 2023



Clinical Translation  
& Commercialisation  
**Medtech**

**\$19.75M**

5 Research Projects  
Round 2 – Now closed

# MRFF \$47M TTRA Program

## Pillar One

National Research Centres to address complications of diabetes and cardiovascular disease



## Pillar Two

Discrete Research Projects to address sector-identified Priority Areas in diabetes and cardiovascular disease



ROUND 1: Interactions between diabetes and cardiovascular disease

ROUND 2: Unmet needs in diabetes and cardiovascular disease

ROUND 3: Indigenous-specific unmet needs in diabetes and cardiovascular disease

## TTRA Partners



# LET'S GET TO KNOW YOU...



Please answer all POLL questions and hit

**SUBMIT**

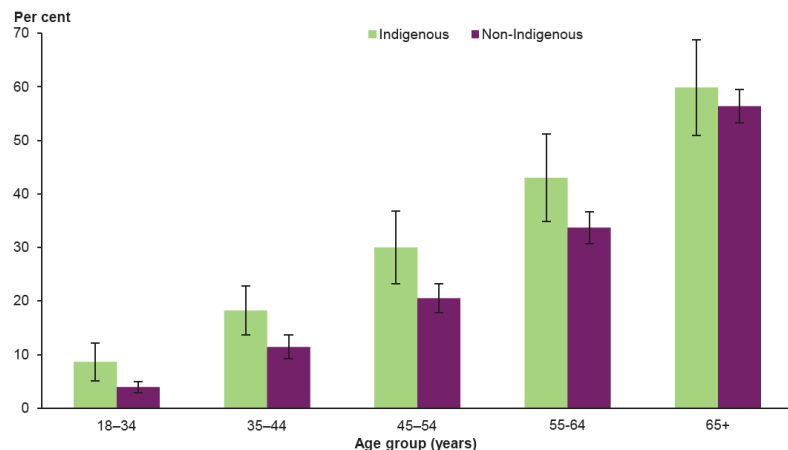
# TTRA Research Projects Round 3



**Dr Erin McAllum**

Acting Director TTRA Program

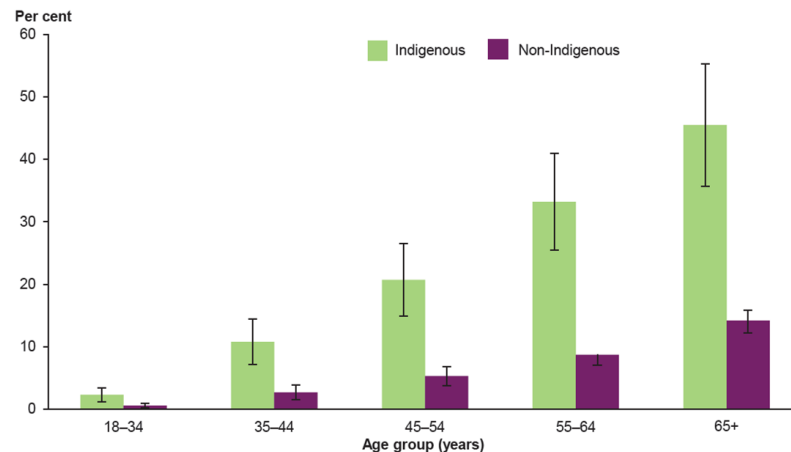
# TTRA Round 3: focus on Aboriginal and Torres Strait Islander health and wellbeing



Note: CVD is based on self-reported diagnoses among those people who participated in the biomedical components of the surveys. Refer to Appendix B for further information.

Source: AIHW analysis of unpublished data from the 2011-12 NHMS and the 2012-13 NATSIHMS. See Appendix Table C11.

**Figure 3.1: Prevalence of CVD among persons aged 18 and over, by Indigenous status and age, 2011-13**



Notes

1. Includes pregnant women.
2. Diabetes prevalence is derived using a combination of HbA1c test results and self-reported information on diabetes diagnosis and medication use. See Appendix B for further information.

Source: AIHW analysis of unpublished data from the 2011-12 NHMS and the 2012-13 NATSIHMS. See Appendix Table C23.

**Figure 4.1: Prevalence of diabetes based on self-reported and measured HbA1c results among persons aged 18 and over, by Indigenous status and age, 2011-13**

Australian Institute of Health and Welfare 2015. Cardiovascular disease, diabetes and chronic kidney disease—Australian facts: Aboriginal and Torres Strait Islander people. Cardiovascular, diabetes and chronic kidney disease series no. 5. Cat. no. CDK 5. Canberra: AIHW.

# TTRA Indigenous Advisory Group



**Prof Alex Brown**

*Co-Chair,  
MRFF Indigenous Health Research  
Fund*



**Dr Fergus Gardiner**

*Director, Public Health & Research  
Royal Flying Doctor Service of Australia*



**Prof Lisa Jackson Pulver AM**

*Deputy Vice-Chancellor Indigenous  
Strategy and Services,  
University of Sydney*



**Mr Ray Kelly**

*Accredited Exercise Physiologist,  
Indigenous Allied Health Australia*



**Mr Chris Lee**

*Senior Policy and Programs Officer,  
National Aboriginal Community  
Controlled Health Organisation*



**Dr Ray Mahoney**

*Senior Research Scientist,  
Australian e Health Research Centre,  
CSIRO*



**Dr Janine Mohamed**

*CEO,  
Lowitja Institute*



**Dr Simon Quilty**

*Medical Advisor,  
Purple House*



**Dr Tanya Schramm**

*President,  
Australian Indigenous Doctors'  
Association*



**Dr Sean Taylor**

*Executive Director Aboriginal Health,  
Top End Health Service*



# Indigenous Priority Setting



**LOWITJA**  
CONSULTING

The artwork by Ngarrindjeri artist, Jordan Lovegrove, shows the growing ripple effect that Aboriginal and/or Torres Strait Islander-led research has on health and wellbeing. The big meeting place in the centre represents Lowitja Institute and MTPConnect. The smaller coloured meeting places connected by footprints that surround it represents our connection and work with Aboriginal and Torres Strait Islander communities and other partners. The other small meeting places with pathways between, represent the communities that this research positively impacts. MTPConnect is pleased to licence this artwork from Lowitja Institute for the purposes of promoting TTRA Round 3 activities.

# Prioritisation Project



Step 1

Identification



Step 2

Development



Step 3

Prioritisation



Step 4

Endorsement



# TTRA Research Projects Round 3: Priority Areas



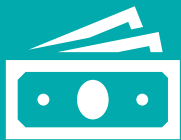
**Priority 1:** Strengths-based perspectives to chronic disease – A need to adopt a strengths-based perspective to chronic disease, which builds and develops the existing strengths, skills and capacities of Aboriginal and Torres Strait Islander peoples.

**Priority 2:** Culturally safe programs and supports – Development of culturally safe programs and supports for D&CVD prevention and promotion of 'healthy lifestyles' among Aboriginal and Torres Strait Islander peoples, using empowering, evidence-based, health promotion campaigns.

**Priority 3:** Culturally safe strategies to address cardiometabolic disease – Culturally safe strategies to address cardiometabolic disease / risk factors to improve the health of Aboriginal and Torres Strait Islander women prior to and during pregnancy. This should also include a focus on babies through the life course, including management of women with pre-existing and gestational diabetes.

# TTRA Research Projects Round 3: Opportunity

Supporting research projects to develop or progress preventative, diagnostic, therapeutic and disease management products, services and/or models or care for D&CVD to benefit the health and wellbeing of Aboriginal and Torres Strait Islander people



\$200K - \$1M  
TTRA Funding



24 months  
maximum term



Advance Translation,  
Demonstrate  
Potential Value &  
Impact



Mentoring &  
Guidance



Annual Partnering  
Summit

# Eligibility

**Eligible entities** receiving TTRA funding include: MRIs, universities, corporations, or corporate Commonwealth, state or territory government entities.

Applicants must have an **Australian Business Number (ABN)**.

Corporations must have **less than 200 employees**, community-controlled organisations are exempt from this eligibility requirement.

Research Project must address one of the identified **Priority Areas**.

The applicant's Research Project must involve research focused on the **translation/implementation of a product, service and/or model of care** that benefits the health and wellbeing of Aboriginal and/or Torres Strait Islander people living with diabetes and/or cardiovascular disease.

Applicants must meet any applicable timing, formatting, system or other similar **administrative requirements** from MTPConnect during the application process.

Individuals involved in the development of the Funding Guidelines are **ineligible** to apply for TTRA Research Projects Round 3 funding.



# Application Process

TTRA Research Projects Round 3 opportunity guidelines published on the MTPConnect website



TTRA Research Projects Round 3 opportunity opens



Applicants submit NOI to gain access to application form



TTRA Research Projects Round 3 webinar series



Applications close **28 April**



Application assessment



Recommendation and decision made for funding award



Notification of outcomes and feedback



Successful applicants enter into a funding agreement with MTPConnect



**TTRA** TARGETED TRANSLATION  
RESEARCH ACCELERATOR  
DIABETES + CARDIOVASCULAR DISEASE  
Powered by **MTPConnect**

**PILLAR 2 RESEARCH PROJECTS  
FUNDING GUIDELINES**

ROUND 3 | DECEMBER 2022

MTPConnect is calling for Round 3 of TTRA Research Projects applications to address Indigenous Priority Areas for diabetes and cardiovascular disease. Applications open on 30 January 2023 and will close on 28 April 2023.

For more information, contact [ttra-dcvd@mtconnect.org.au](mailto:ttra-dcvd@mtconnect.org.au)



Australian Government  
Department of Industry,  
Science and Resources

Industry  
Growth  
Centres



**TTRA-DCVD@MTCONNECT.ORG.AU**

# Selection Criteria



**Dr Andionne Parlade**  
Associate Project  
Manager



 **LOWITJA  
INSTITUTE**  
**Dr Michelle Kennedy**  
Executive Manager of  
Research and  
Knowledge Translation



**Christopher Lee**  
Diabetes Consumer and  
Advocate; Gulumerridjin  
(Larrakia), Wardaman and  
Karrajari Nations  
Assistant Director, Aged Care  
and Disability Programs,  
NACCHO



 **AusHSI** Australian Centre  
for Health Services  
Innovation  
**Megan Campbell**  
Operations Director



**Deanne Minniecon**  
National Manager,  
Aboriginal and Torres Strait  
Islander Engagement,  
Diabetes Australia



# Selection Criteria

## Selection Criteria Themes – 20% each

Challenge, Solution  
& Impact



Community  
Engagement



Project  
Plan



Translation &  
Implementation



Team &  
Capabilities



# Selection Criteria

## Challenge, Solution & Impact



20%

- Clear description of the **scope of challenge** and how the product, service, and/or model of care addresses the **Priority Area**
- **Benefits health and wellbeing** including equity of health service delivery and/or access
- Robust **preliminary evidence**; be of value for communities, health service providers, and health system managers
- Clear **advantage and differentiation** over current solutions
- Implementation will contribute to **community economic and workforce development**

# Selection Criteria

## Community Engagement



20%

- Evidence of **engagement with cultural knowledge holders** and integration of Indigenous ways of knowing, being and doing
- Community engagement in the **design** of the product, service and/or model of care
- Plans for community engagement throughout the **delivery** of the project and the **future implementation, monitoring and evaluation** of the project.
- Can legally access necessary data
- Sound and appropriate strategies for **data sovereignty** and **security**
- Clear plans for **knowledge sharing** and ongoing **reciprocity**

# Selection Criteria

## Project Plan



20%

- Clearly justified activities, deliverables/milestones and outcomes
- Significantly advance the **translation** of the product
- includes a **process evaluation** that will inform future implementation, scale and/or spread
- **Appropriate budget**, including details of any co-contributions, and well-defined and **appropriate timeframes**
- All **ethical considerations** have been identified and appropriate ethics approval either obtained or a clear pathway to ethics approval outlined
- Key **project risks** are identified, with mitigation strategies

# Selection Criteria

## Translation & Implementation



20%

- Strategies to engage a broad range of **stakeholders** that can support implementation both **throughout and beyond** this project
- Consideration of how the product, service and/or model of care **fits within clinical workflows and/or typical individual health journeys**
- **Future, wider implementation** of the product, service and/or model of care, including (as applicable), regulation, commercialisation, end user uptake/adoption, and funding models
- Appropriate methodology for **ongoing process and outcome evaluation** of the product, service and/or model of care to assess acceptability, sustainability, cost effectiveness, and inform broader future implementation

# Selection Criteria

## Team & Capabilities



20%

- Team has the **requisite experience** and demonstrated **cultural competence** and **track record** in Aboriginal and Torres Strait Islander health research
- Employing Aboriginal and Torres Strait Islander people and embedding **Aboriginal and/or Torres Strait Islander leadership** in all aspects of the project.
- Appropriate **governance structures** have been or will be put in place
- Establishes appropriate **partnerships** across the health sector
- Includes researchers across career stages and there are clear pathways for **building the capacity and capabilities** of the entire team.

The graphic features a dark background with vibrant Indigenous Australian art. On the left, there's a large, intricate circular design with concentric rings of yellow, red, and white, surrounded by smaller circular motifs. To the right, the TTRA logo is displayed in a bold, sans-serif font, with 'TTRA' in white and 'TARGETED TRANSLATION RESEARCH ACCELERATOR' in smaller white text below it. Further down, a red rounded rectangle contains the text 'TTRA Round 3 Funding Research Projects focused on Indigenous Diabetes & Cardiovascular Disease'. At the bottom center, a yellow circle with a black border contains the words 'NOW OPEN' in bold, black, sans-serif capital letters.

**TTRA**  
TARGETED TRANSLATION  
RESEARCH ACCELERATOR  
DIABETES + CARDIOVASCULAR DISEASE

TTRA Round 3 Funding  
Research Projects  
focused on Indigenous Diabetes  
& Cardiovascular Disease

**NOW  
OPEN**

For more information



- Submit **Notice of Intent** to gain access to SmartyGrants Application Form
- Submissions will close at **16:00 AEST on 28 April 2023**



# Questions?



- Please enter them in the Q&A box
- You can tick the ANONYMOUS checkbox
- UPVOTE existing questions

# Thanks for connecting with us.

- Please take a moment to leave us some FEEDBACK
- Just CLICK THE SURVEY LINK that will appear when you log out. Yes, it is ANONYMOUS and QUICK!



For further information please contact:  
[TTRA-DCVD@MTPCONNECT.ORG.AU](mailto:TTRA-DCVD@MTPCONNECT.ORG.AU)

CONTACT US FOR FURTHER

# INFORMATION



PHONE

+61 3 9070 8298

EMAIL

info@mtpconnect.org.au

GET SOCIAL



Join the conversation:  
[@MTPConnect\\_AUS](#)  
[#MTPConnect](#) [#AusInnovation](#)



Follow MTPConnect:  
[@MTPConnect](#)



Subscribe on:  
[Apple Podcasts](#)  
[Spotify](#)



Australian Government  
Department of Industry,  
Science and Resources

Industry  
Growth  
Centres

[MTPCONNECT.ORG.AU](https://mtpconnect.org.au)